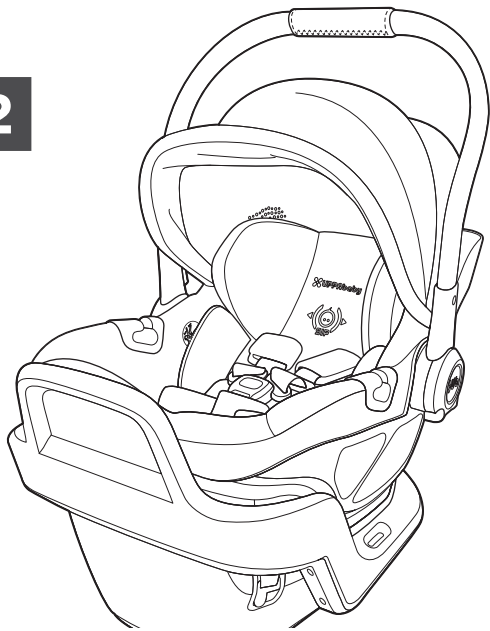


UPPAbaby®  
ARIA™ V2



From 1.8 – 10 kg



<b>Product Information</b>	<b>2</b>	<b>Base Installation With UAS</b>	<b>28</b>	<b>Carrier Installation with Vehicle Seat Belt</b>	<b>47</b>	<b>Stroller Compatibility</b>	<b>68</b>
Registration	2	Leveling Base	28	Determining Best Installation Method	47	Fitting Carrier to Stroller Frame	68
Certification	2	Base Installation With UAS	29	Leveling the Carrier	48	Releasing Carrier from Stroller Frame	69
Child Use Recommendations	3	Installing Load Leg	30	Lap/Shoulder Belt Preferred Routing Method	47		
Start Here	4	What is a Waterfall?	31	Lap/Shoulder Belt Optional Routing Method	53	<b>Care and Maintenance</b>	<b>70</b>
The Right Fit	5	Safety Check	32	Lap Belt Only Routing Method	54	SIP Padding Removal	70
Notice of Expiration	6	Uninstalling Base	34	Safety Check	55	Seat Padding Removal	71
		Storing Load Leg	35	Aircraft Installation	56	Seat Padding Installation	73
<b>Warnings and General Safety Instructions</b>	<b>7</b>					SIP Padding Installation	75
		<b>Base Installation With Vehicle Seat Belt</b>	<b>36</b>	<b>General Use</b>	<b>57</b>	Cleaning	76
<b>Features Overview</b>	<b>16</b>	Leveling Base	36	Infant Insert	57		
Overview of Base	16	Lap/Shoulder Routing Method	38	SIP Carriage and Harness Positioning	60	<b>Warranty</b>	<b>77</b>
Overview of Carrier	18	Lap Belt Only Routing Method	40	Securing Your Child	61		
Overview of All-Weather Footcover	20	Installing Load Leg	42	Attaching Carrier to Base	62		
		What is a Waterfall?	43	Removing Carrier from Base	64		
<b>Vehicle Compatibility</b>	<b>22</b>	Safety Check	44	Using Canopy	65		
Choosing A Vehicle Seating Location	22	Uninstalling Base and Storing Load Leg	46	Using Carry Handle	66		
Determining Best Installation Method	23			Safety Check	67		
UAS (Universal Anchorage System)	24						
Overview of Vehicle Seat Belt Systems	25						
Unsafe Vehicle Seat Belt Systems and Seating	26						

**Read all instructions before use  
of this child restraint. Keep these instructions  
for future reference.**

## Product Information

### REGISTRATION

Model Name: **Aria V2** Model Number: **1002-ARI-CA**

Serial Number: \_\_\_\_\_

Date of Purchase: \_\_\_\_\_

**TAKE A MOMENT TO FILL OUT THE ABOVE INFORMATION.** Information can be found on the manufacture labels or engraved on the underside of the carrier.



Please register your Child Restraint by filling out and sending the postage-paid registration card that came with your Child Restraint or register online at: <https://uppbaby.ca/register/carseat/>. Child restraints can be recalled for a variety of

safety reasons. **You MUST register this restraint to be reached in a recall.** For recall information, call Transport Canada's Motor Vehicle Safety Centre at 1-800-333-0371 or go online to [tc.gc.ca/eng/motorvehiclesafety/safedrivers-childsafety-notices-menu-907.htm](https://tc.gc.ca/eng/motorvehiclesafety/safedrivers-childsafety-notices-menu-907.htm).

### CERTIFICATION



This child restraint system conforms to all applicable Canadian Motor Vehicle Restraint Systems and Booster Seat Safety Regulation (RSSR) and Canadian Motor Vehicle Safety Standard (CMVSS 213) for child restraint systems and (CMVSS 213.1) for infant restraint systems.



This child restraint is certified for aircraft use. UPPAbaby and Transport Canada Civil Aviation (TCCA) strongly urge you to secure your child in a child restraint system (CRS) or device for the duration of your flight.

## Product Information

### CHILD USE RECOMMENDATIONS

**Children should remain rear-facing for as long as possible.**

Rear Facing: UPPAbaby advises that all infants and toddlers should ride in a rear-facing car safety seat (CSS) as long as possible, until they reach the highest weight or height allowed by their CSS's manufacturer. This child restraint is for use by children who meet BOTH requirements below:

**WEIGHT REQUIREMENTS: 1.8 -10.0 kg (4 - 22 lbs)**

**HEIGHT REQUIREMENTS: 81.3 cm (32") or less**

## Product Information – Start Here

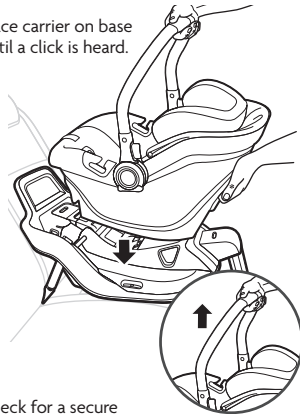
### Size Requirements



From 1.8 – 10 kg  
(4 – 22 lbs) and  
81.3 cm (32 in) or less

### Attach Carrier to Base

Place carrier on base until a click is heard.

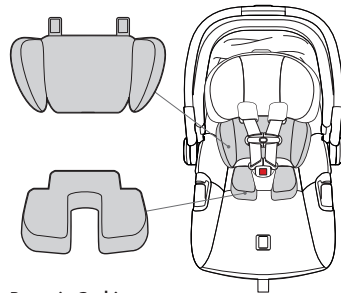


Check for a secure connection by pulling up on carry handle.

### Comfort Inlay Usage

#### Back Positioning Insert

Remove Back Positioning Insert when the child reaches approximately **4 Months**.

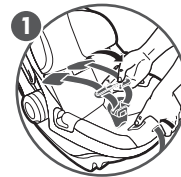


#### Preemie Cushion

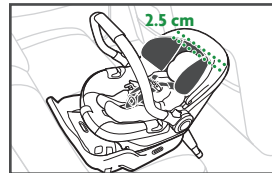
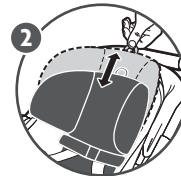
Remove Preemie Cushion once infant reaches approximately **4.1 kg (9 lbs)**.

### Headrest/Harness Placement

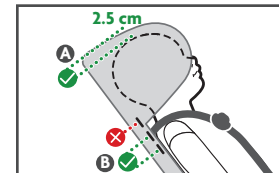
Loosen harness



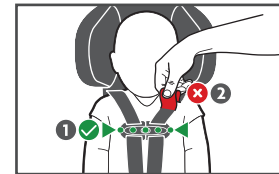
Pull up on adjuster tab and slide the head restraint up or down



The top of the child's head should not be less than 2.5 cm (1") from the top of the headrest structure.



Minimum 2.5 cm (1") gap between the child's head and top of headrest **A**. Harness should be at the shoulders or 1-2 positions below **B**.



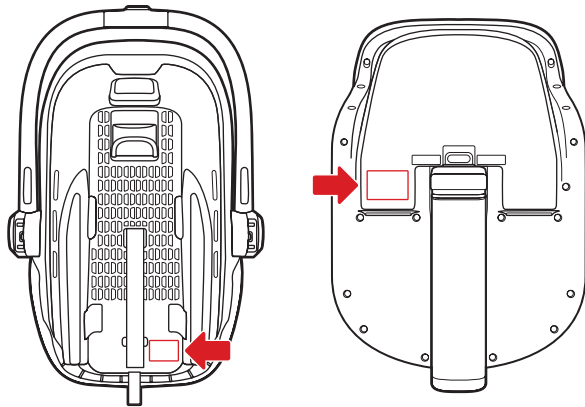
Retainer clip must be at armpit level **1** and harness straps should be snug **2**.



## Product Information

### NOTICE OF EXPIRATION

Discontinue use of this child restraint after 10 years from the date of manufacture or after a crash. Refer to labels on bottom of Carrier and Base.



## Warnings + General Safety Information

### **WARNING**

#### **DEATH OR SERIOUS INJURY CAN OCCUR**

According to accident statistics, children are statistically safer when properly restrained in the rear seating positions than in the front seating positions, whether there are airbags, advanced airbags or no airbags at all. To ensure your child's safety refer to approved seating positions on page 22 in this manual or your Vehicle's Owner Manual.

- **NEVER** leave Child Restraint unsecured in your vehicle even when it is unoccupied. In a crash, it could become a projectile and injure other vehicle occupants.
- Use only in rear-facing position when using it in the vehicle.

## Warnings + General Safety Information

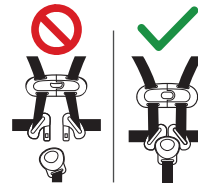


**NEVER** place this child restraint on a front seat with an airbag. **DEATH OR SERIOUS INJURY** can occur. An airbag can strike a rear-facing infant restraint with enough force to crack the shell and seriously injure or kill an infant. The back seat is the safest place for children 13 and under. Refer to the vehicle owner's instruction book before installing this child restraint in a seating position with side airbags.

Snugly adjust the belts provided with this child restraint around your child. A snug strap should not allow any slack. It lies in a relatively straight line without sagging. It does not press on the child's flesh or push the child's body into an unnatural position.

## Warnings + General Safety Information

### **WARNING**



Children have **STRANGLED** in loose or partially buckled harness straps. Fully restrain the child even when carrier is used outside the vehicle.

**SUFFOCATION HAZARD:** Infant carrier can roll over on soft surfaces and suffocate child. **NEVER** place carrier on beds, sofas, or other soft surfaces.

- **NEVER** leave child in carrier when straps are loose or undone.
- **NEVER** place carrier near a window where cords from blinds or drapes could strangle a child.

### Warnings + General Safety Information

- **NEVER** hang strings on or over the carrier or attach to handle
- **NEVER** place items with a string around a child's neck, such as hood strings, pacifier cords, etc.

**FALL HAZARD:** Child's movement can slide carrier.

- **NEVER** place carrier on counter tops, tables, or other elevated surfaces.  
**DO NOT** use on shopping carts.
- **NEVER** leave child unattended.

### Warnings + General Safety Information

#### **WARNING**



**FALL HAZARD:** The carrier can fall from the shopping cart.  
**DO NOT USE** on shopping cart.

#### **SAFETY WARNINGS:**

Failure to follow these instructions could result in serious injury to your child or other vehicle occupants.

- **ALWAYS** keep child properly harnessed when child is in seat.

### Warnings + General Safety Information

- **DO NOT** remove or cover up any of the warning or product labels on this Child Restraint. All labels include information required by law.
- **DO NOT** lubricate buckles and fasteners.

#### **AVOID BURN INJURY:**

- **ALWAYS** check all surfaces of restraint before securing your child. In warm weather, child restraints can become very hot. Park in the shade or where sun does not directly hit the child restraint. Cover the child restraint with a sheet or blanket when not in use.

#### **AVOID INJURY FROM FLYING OBJECTS IN A CRASH:**

- **ALWAYS** properly store lower anchor connectors when not in use.
- **DO NOT** leave loose objects, e.g. cups, toys, bags, umbrellas, etc., in the vehicle because they can become deadly projectiles in a crash.

### Warnings + General Safety Information

- Check the vehicle owner's manual for more information about airbag/child restraint use.
- **DO NOT** use seat if it is damaged or broken, expired (over 10 years from date of manufacture), missing instructions, missing parts, or if the straps are cut, frayed, or damaged in any way.
- **DO NOT** use this child restraint system if it has been in a vehicle accident.
- **DO NOT** use clothing or blankets that interfere with fastening or tightening the harness **INSTEAD** place a blanket over the child after being properly secured in the harness.
- **DO NOT** use this child restraint system if the top of the child's head is less than 2.54 cm (1") from the top of the headrest when in its highest position.

### Warnings + General Safety Information

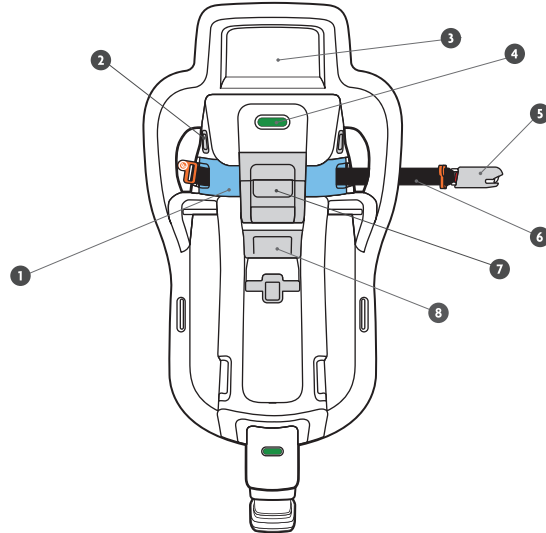
- **DO NOT** use this Child Restraint system in a vehicle seating position where it cannot be tightly secured.
- **DO NOT** install in rear-facing and side-facing vehicle seats.
- **DO NOT** modify this restraint except as instructed in this instruction book. Minor modifications can change the way a Child Restraint performs in a crash.
- **DO NOT** take child out of the Child Restraint while the vehicle is moving.
- **DO NOT** allow children to play with this Child Restraint. It is not a toy.
- **DO NOT** use any accessories, pads, or products supplied by other manufacturers with this Child Restraint, unless approved and tested by UPPAbaby. Items not tested with this restraint could injure your child.
- **DO NOT** use a child restraint with damaged or missing parts.

### Warnings + General Safety Information

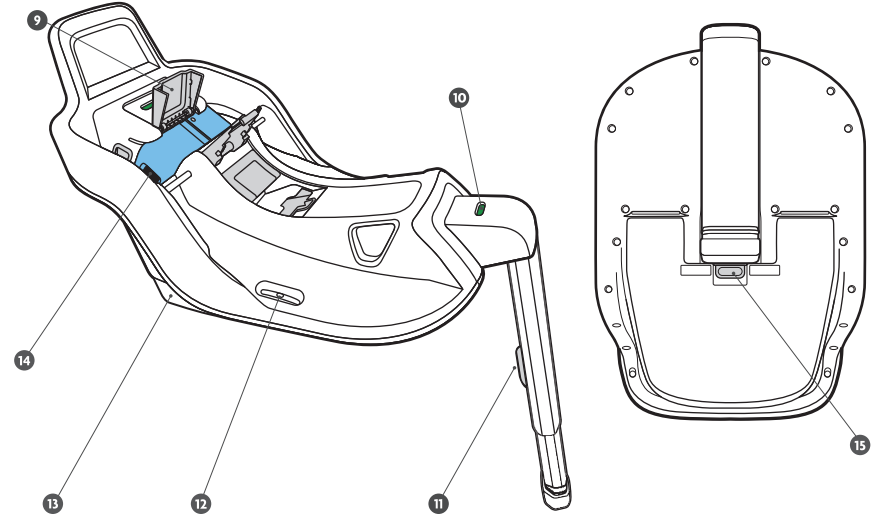
- **DO NOT** carry by the canopy.
- **DO NOT** place carrier on top of shopping cart. Carrier will not be secure and could fall causing injury to child.
- **DO NOT** hang objects from Rear Vehicle Seat Belt Guide.
- **VEHICLE CLASSIFICATION:** This car seat is only for use in the following classifications of vehicles: passenger cars, trucks and multi-purpose vehicles such as SUVs (sports utility vehicles) and CUVs (crossover utility vehicles).

## Features Overview – Overview of Base

- 1 Vehicle Belt Path (2)
- 2 Lower Anchor UAS Connector Release Buttons (2)
- 3 Anti-Rebound+ Panel
- 4 Tightness Indicator
- 5 Lower Anchor UAS Connectors
- 6 Lower Anchor UAS Connector Webbing
- 7 Vehicle Belt Lock-Off (Closed)
- 8 Level Adjust Handle
- 9 Vehicle Belt Lock-Off (Open)
- 10 Load Leg Angle Indicator
- 11 Load Leg Extension Release Button
- 12 Level Angle Indicators (2)
- 13 Level Adjustment Foot
- 14 Lower Anchor UAS Connector Storage
- 15 Load Leg Release Button

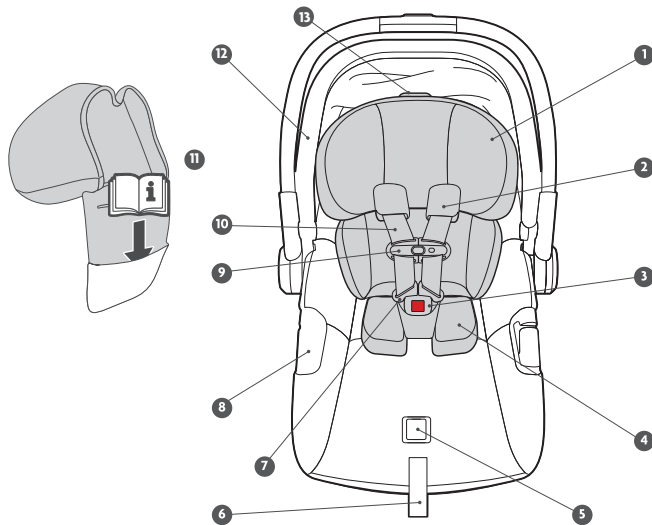


## Features Overview – Overview of Base

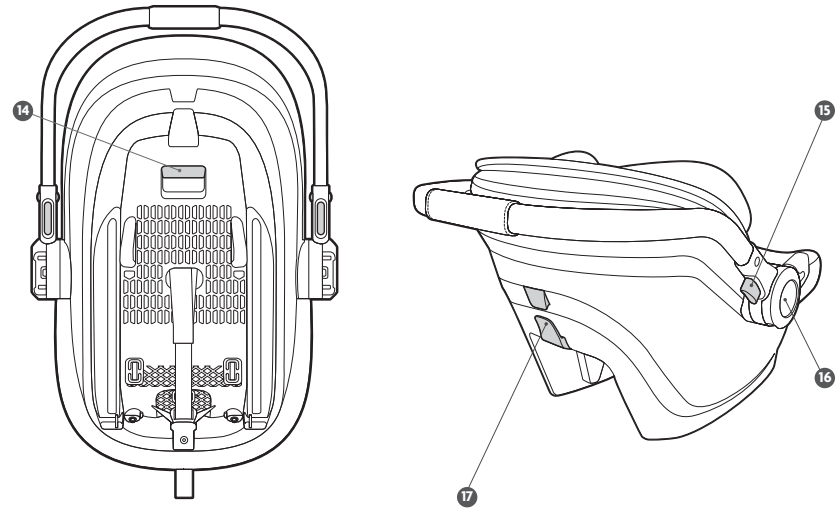


## Features Overview – Overview of Carrier

- 1 Side Impact Protection (SIP)
- 2 Harness Covers (2)
- 3 Buckle
- 4 Infant Insert
- 5 Harness Adjuster Release
- 6 Harness Adjuster Strap
- 7 Buckle Latch Plates (2)
- 8 Vehicle Seat Belt Guides (2)
- 9 Retainer Clip
- 10 Harness Straps
- 11 Instruction manual location
- 12 Canopy
- 13 (SIP) Adjustment Tab
- 14 Carrier Release From Base/Stroller
- 15 Carry Handle Adjustment Buttons (2)
- 16 Stroller Attachment
- 17 European Vehicle Belt Guide



## Features Overview – Overview of Carrier

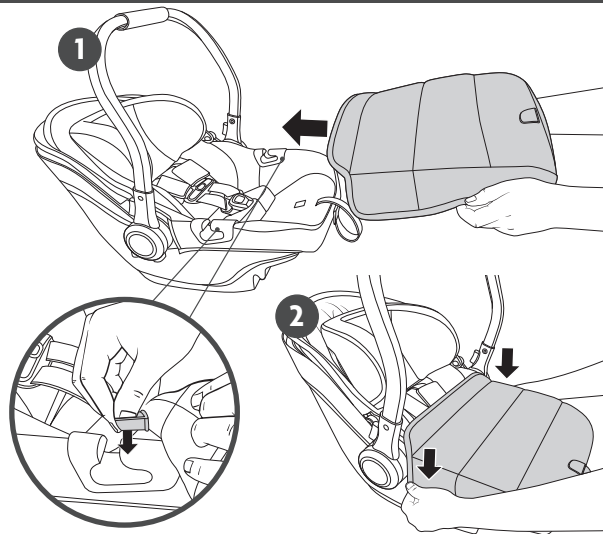


## Features Overview – All-Weather Footcover

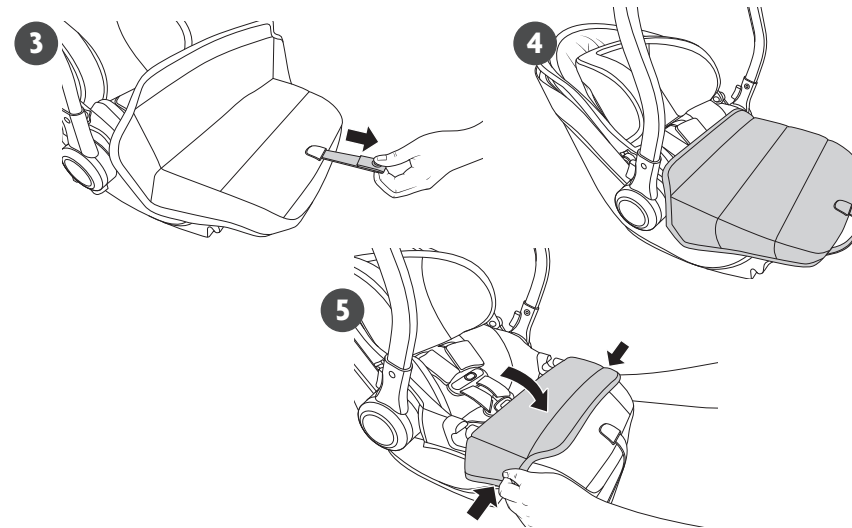
### ATTACHING THE FOOTCOVER

- 1 Loop the elastic bands over the belt guide slots to ensure a secure fit.
- 2 Secure footcover over front of the carrier and tuck the front edge underneath the carrier.
- 3 Route the harness adjuster strap through the alok button on the footcover.
- 4 The footcover can be used in two positions: fully extended or partially folded.
- 5 Footcover can be adjusted by folding back the top and fastening the magnetic buttons together.

**NOTE:** To remove footcover follow steps in reverse.



## Features Overview – All-Weather Footcover



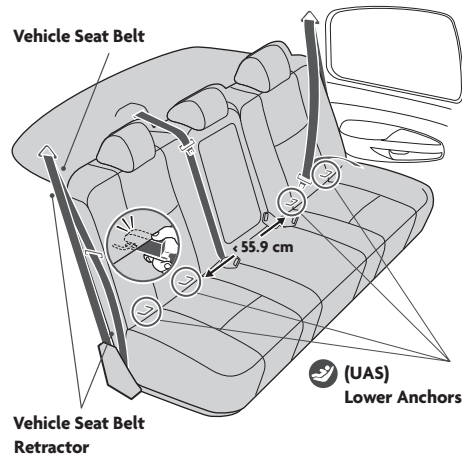


## Vehicle Compatibility – Choosing Vehicle Location

**Please read the following information before installing this Child Restraint!**

The safest seating position is one that works best for your specific car seat, family and vehicle. When determining whether the Aria rear facing car seat can be used with lower anchors in the rear center seating position, it is critical that you refer to your vehicle owner's instruction manual. If the Aria does not install best in the rear center seating position, it is recommended to move to one of the outboard seating positions.

Before installing this child restraint, you MUST determine the method of installation and the best vehicle seating position for that method. This child restraint can be installed either using the **(UAS) Universal Anchorage System** or the **Vehicle Seat Belt**.

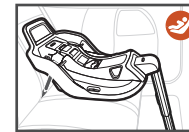


## Vehicle Compatibility – Determining Best Installation Method

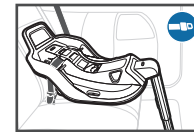
At this point take out your VEHICLE OWNER'S INSTRUCTION MANUAL. You will need this to look up different features in your vehicle that might affect the installation

**WARNING: NEVER** place a rear-facing only child restraint in front of an active airbag.

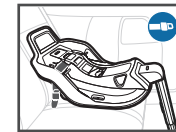
### BASE INSTALLATION



**(UAS) Lower Anchor**  
(page 28)

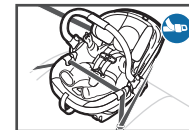


**Lap/Shoulder Belt**  
(page 36)



**Lap Belt Only**  
(page 36)

### CARRIER INSTALLATION



**Lap/Shoulder Belt Preferred Routing**  
(page 47)



**Lap/Shoulder Belt Optional Routing**  
(page 52)



**Lap Belt Only**  
(page 54)



**NOTE:** Carry handle must be locked in the (5th) rebound position when in use in the vehicle.



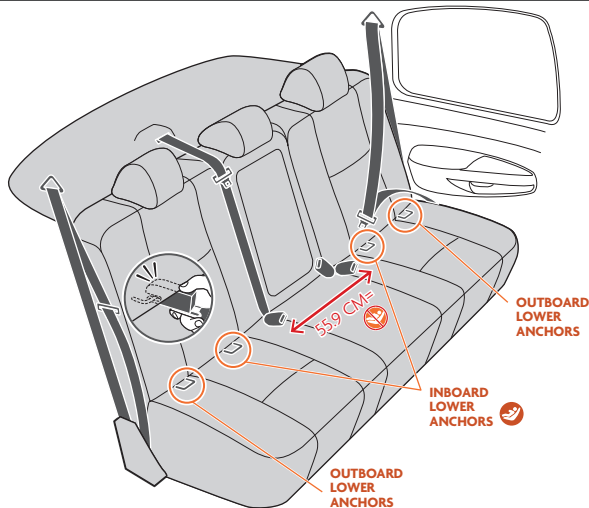
## Vehicle Compatibility

### UAS (universal Anchorage System)

Most vehicles manufactured after September 1, 2002 are equipped with **UAS (Universal Anchorage System)**. Check your vehicle owner's instruction book to determine lower anchor compatible seating positions.

**NOTE:** No tether is required with this rear-facing carrier. Only lower anchors are used.

**NOTE:** In order to use the rear center seating position with lower anchor, the distance between the lower anchors may be up to 55.9 cm (22 in) and the seating position must be approved by the vehicle manufacturer. If spacing between the lower anchors is greater than 55.9 cm (22 in) or if the seating position is not approved by the vehicle manufacturer then use the vehicle seat belt for installation.



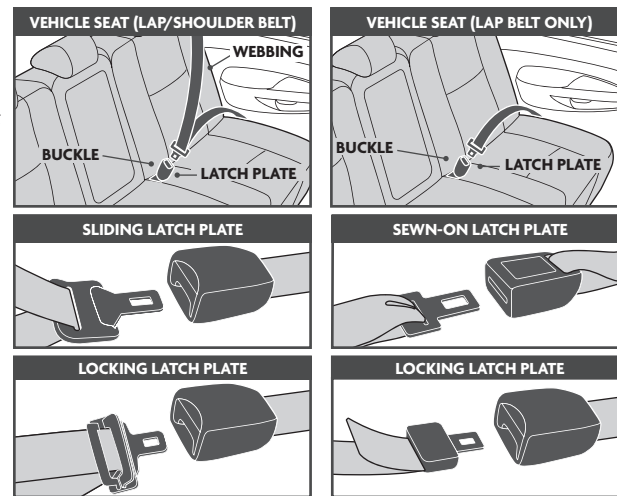
## Vehicle Compatibility

### Overview of Vehicle Seat Belt Systems

If you do not use lower anchor to properly secure the child restraint, you must use the **VEHICLE SEAT BELT SYSTEM**. Seat belt systems vary by make, model, and year of your vehicle. There are some vehicle belts that will NOT work with this child restraint or that require additional steps.

**CHECK YOUR VEHICLE OWNER'S INSTRUCTION MANUAL for information regarding your vehicle seat belt system(s).**

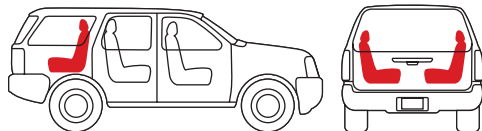
This child restraint is compatible with most vehicle seat belt systems.



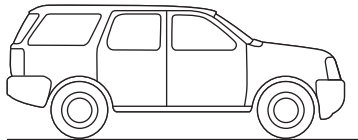
## Vehicle Compatibility – Unsafe Vehicle Seat Belt Systems and Seating

This Child Restraint can only be installed on vehicle seats that face forward.

**DO NOT** install in seats that face to the sides or rear of the vehicle.

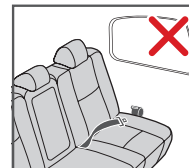


**ALWAYS** park on a level surface when installing a Child Restraint.

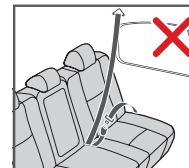


## Vehicle Compatibility – Unsafe Vehicle Seat Belt Systems and Seating

**DO NOT** use this Child Restraint with the following seat belt systems:



Lap belts with  
emergency locking  
retractor



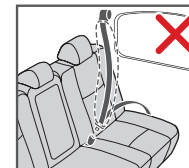
Motorized (automatic)



Lap/Shoulder with  
two retractors



Door mounted



Inflatable

**WARNING! DEATH OR SERIOUS INJURY CAN OCCUR.**

CHECK YOUR Vehicle instruction book for information regarding your vehicle seat belt system(s). Not all vehicle seat belts work with this Child Restraint.



## Base Installation with Lower Anchors (UAS)

We recommend using the load leg to optimize safety of the child in the seat. Load leg should be placed in stowed position when not in use. If installing without the load leg, bypass step 1 and proceed to step 2.

### LEVELING BASE

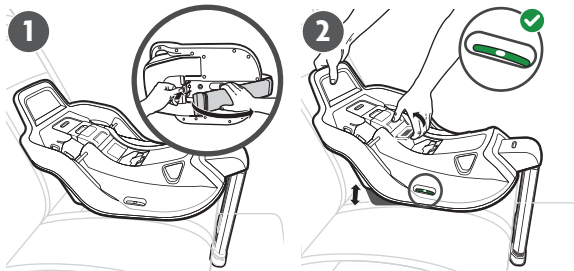
- 1 Press the load leg release button on bottom of the base and pull load leg out from storage. Place on the vehicle seat with the load leg extended toward the front of the vehicle cushion.

**NOTE:** We recommend removing the vehicle floor mat before installation.

- 2 Lift the level adjust handle on the top of the base to extend the foot and change the recline angle. Check the bubble level angle indicator on either side of the base. The base is level when the bubble is fully between the lines. NO partial bubble allowed.

**NOTE:** If the bubble is not visible, lower the foot to the lowest position and complete installation. Upon completion, the bubble should fall between the two lines.

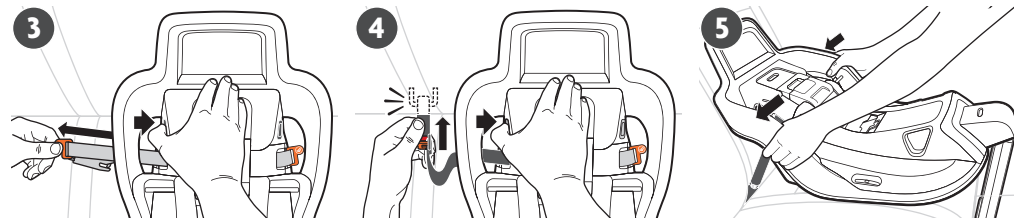
**NOTE:** Vehicle must be parked on a level surface to properly level the base.



If proper angle cannot be achieved with level adjustable foot, a rolled towel may be used. Foot must be in fully extended position.



## Base Installation with Lower Anchors (UAS)



- 3 Locate the lower anchor connectors on either side of the base and remove by pushing the corresponding orange button while pulling the connector out of the lower anchor (UAS) storage pocket.

- 4 Attach the lower anchor connectors to the vehicle lower anchors located in the vehicle seat bight (crease of seat).

**NOTE:** Check lower anchor connectors are in the upright position.

- 5 Apply pressure firmly into the base allowing excess lower anchor connector webbing to retract and tighten.

**NOTE:** A rocking motion may be necessary to retract excess lower anchor connector webbing.

**NOTE:** Anti-Rebound+ Panel must make full contact with the seat back. If it does not make full contact, please refer to the Waterfall note (page 31).



Installation is complete when tightness indicator turns from **RED** to **GREEN** and stays **GREEN** when downward push is discontinued.



## Base Installation with Lower Anchors (UAS)

CONTINUE IF USING PREFERRED LOAD LEG INSTALLATION



### INSTALLING LOAD LEG

**1** After the base is secured, rotate load leg extension until its showing fully **GREEN**.



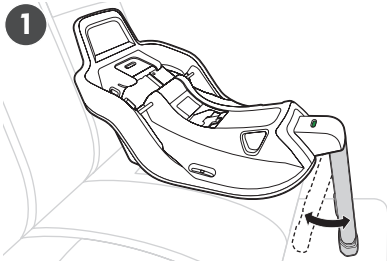
**2** Using two hands, separate the two ends ensuring the bottom of the load leg foot is making good contact with the vehicle floor.

**NOTE:** After installing the load leg, check the level angle indicator on base to ensure the bubble is still within the lines.

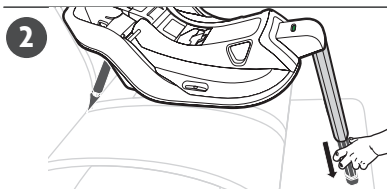
**REVIEW SAFETY CHECK ON PAGE 32.**

All steps must be achieved.

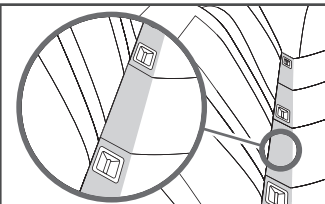
**1**



**2**



## Base Installation with Lower Anchors (UAS)

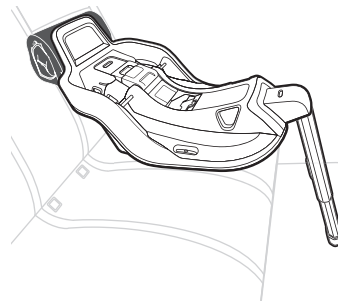


### WHAT IS A WATERFALL?

Many late model vehicles have what industry professionals call a waterfall. A waterfall is the wedge of material where your vehicle seat cushion and seat back meet. In some cases, this may prevent the Anti-Rebound+ Panel from making full contact with the vehicle seat back.

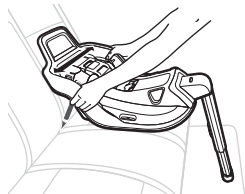
This is an easy issue to resolve by following the steps below:

- 1** Uninstall your Aria base.
- 2** Adjust the level adjustment foot to achieve proper recline level.
- 3** Push the base into the seat back. If there is a gap between the top of the Aria base and the back of the vehicle seat, place a rolled hand towel in the gap flush with the top of the base.
- 4** Proceed to **BASE INSTALLATION WITH LOWER ANCHORS (UAS)** (page 26). Follow Safety Check (page 32) to confirm proper installation.

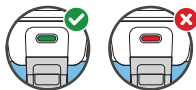




## Base Installation with Lower Anchors (UAS) – Safety Check



Base doesn't move more than 2.5 cm (1") side-to-side and front-to-back at the belt path. Lower anchor UAS connector webbing is secure and untwisted.



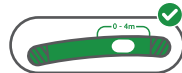
Ensure tightness indicator is **GREEN** after each use. If it is not, apply pressure by pushing base into seat bight (crease of seat) to tighten.



## Base Installation with Lower Anchors (UAS) – Safety Check



Recline angle is correct. Check the level angle indicator on base to ensure the bubble is still within the lines. **NO** partial bubble allowed.



**ALWAYS** check the Recline Position Indicator on the base and adjust the recline bubble to be between the designated range indicated for the infant insert use.



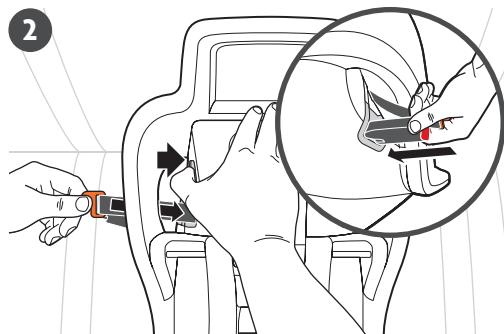
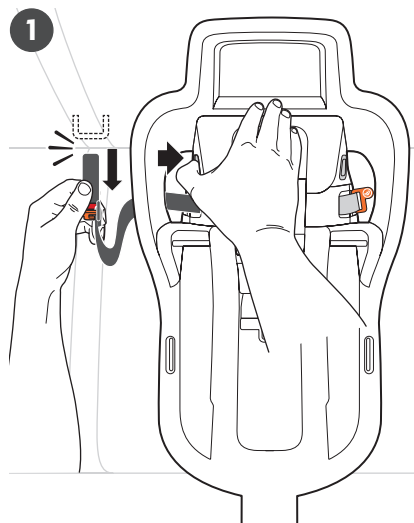
Make sure the load leg is secured and contacts the vehicle floor. Check that the load leg angle indicator is **GREEN**. Ensure good contact between load leg foot and floor. Always store the load leg under the base when not in use.

**ALL STEPS MUST BE COMPLETE.**

If not, return to page 28 and start over.



## Base Installation with Lower Anchors (UAS)

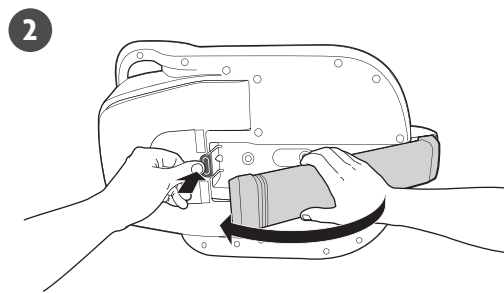
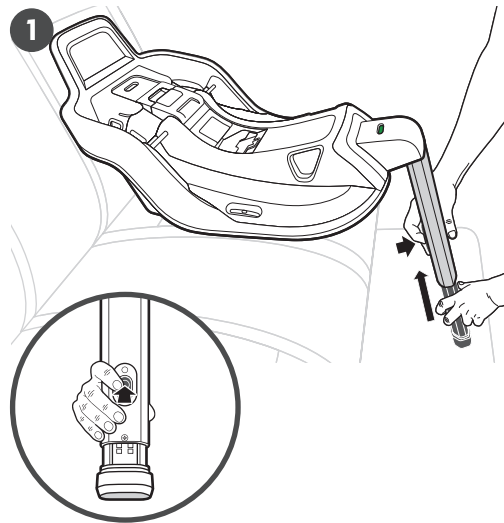


### UNINSTALLING BASE

- 1 Press the **RED** button on the lower anchor UAS connector while pulling the connector off the vehicle anchor.
- 2 Store lower anchor UAS connectors in designated housing found on each side of the base.



## Base Installation with Lower Anchors (UAS)



### STORING LOAD LEG

- 1 Push load leg extension release button on back of load leg and bring foot up until it locks into place.
- 2 Bring load leg back into base until it clicks into secure/stowed position.



## Base Installation with Vehicle Seat Belt

We recommend using the load leg to optimize safety of the child in the seat. Load leg should be placed in stowed position when not in use. If installing without the load leg, bypass step 1 and proceed to step 2.

### LEVELING BASE

- 1 Press the load leg release button on bottom of the base and pull load leg out from storage. Place on the vehicle seat with the load leg extended toward the front of the vehicle cushion.

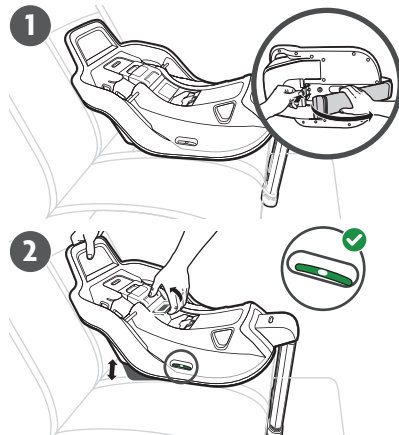
**NOTE:** We recommend removing the vehicle floor mat before installation.

- 2 Lift the level adjust handle on the top of the base to extend the foot and change the recline angle. Check the bubble level angle indicator on either side of the base. The base is level when the bubble is fully between the lines. NO partial bubble allowed.

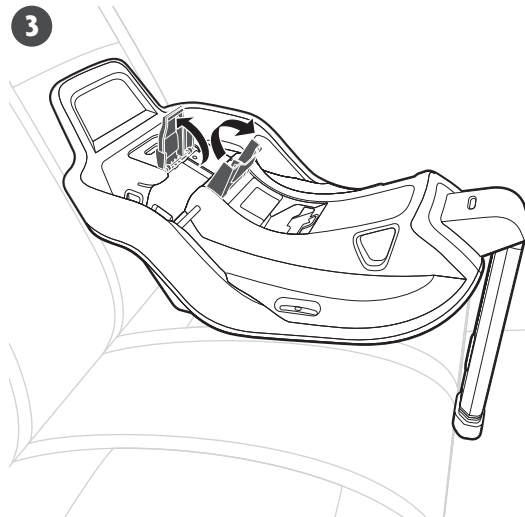
**NOTE:** If the bubble is not visible, lower the foot to the lowest position and complete installation. Upon completion, the bubble should fall between the two lines.

**NOTE:** Vehicle must be parked on a level surface to properly level the base.

- 3 Open the lock-off door by lifting the top then the bottom portions to access the belt path.



## Base Installation with Vehicle Seat Belt



If proper angle cannot be achieved with level adjustable foot, a rolled towel may be used. Foot must be in fully extended position.

Proceed to chosen installation method:

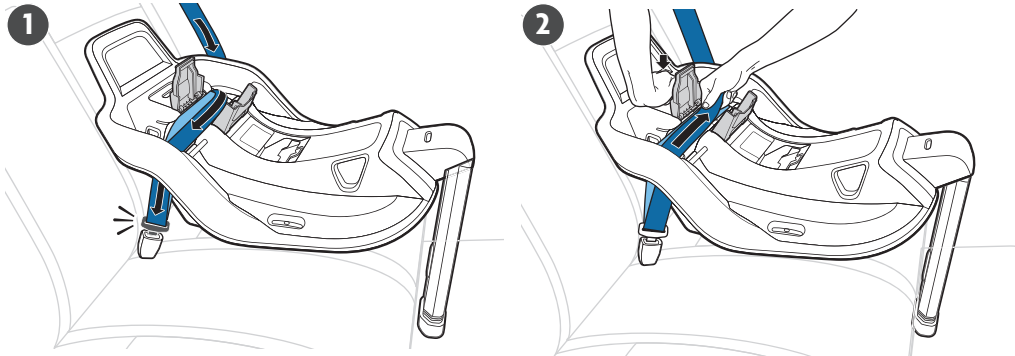
**LAP/SHOULDER ROUTING METHOD** Page 38

**LAP BELT ONLY ROUTING METHOD** Page 40





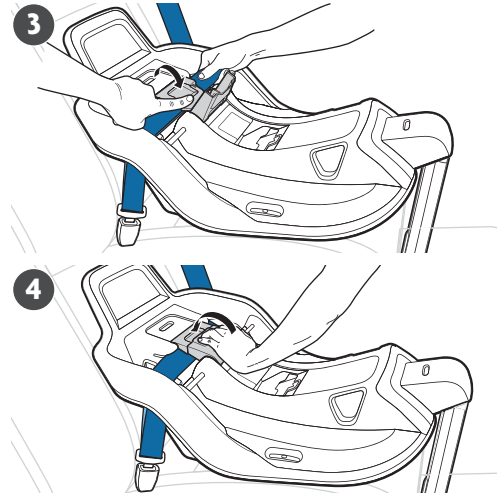
## Base Installation with Vehicle Seat Belt Lap/Shoulder Routing Method



- 1 Route the vehicle belt through the vehicle belt path while guiding the lap portion of the belt as close as possible to the top of the lock-off where the door hinges. Buckle the vehicle belt.
- 2 Hold shoulder portion of belt above base. With one hand, push down in the direction of the seat bight (crease of seat) and hold firm as you pull shoulder belt.



## Base Installation with Vehicle Seat Belt Lap/Shoulder Routing Method



- 1 While holding the shoulder belt firmly, check the indicator. If **GREEN**, close the top of the lock-off over the lap/shoulder belt.

**NOTE:** Tightness indicator should be **GREEN**.



- 2 Push the bottom of the lock-off all the way down until you hear an audible click.

**NOTE:** Anti-Rebound+ Panel must make full contact with the seat back. If it does not make full contact, refer to the Waterfall note (page 43).

**LOAD LEG INSTALLATION CONTINUE TO PAGE 42.**

**REVIEW SAFETY CHECK ON PAGE 44.**

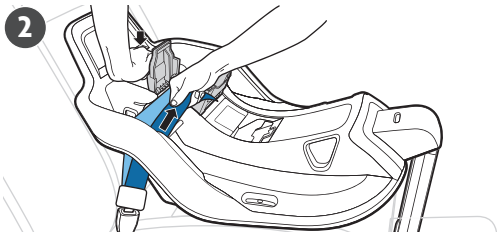
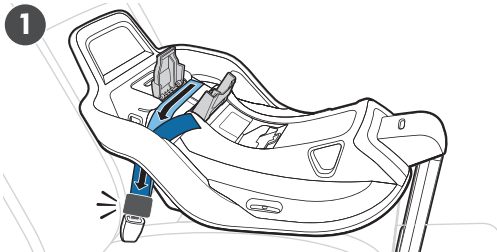
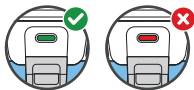
All steps must be achieved.



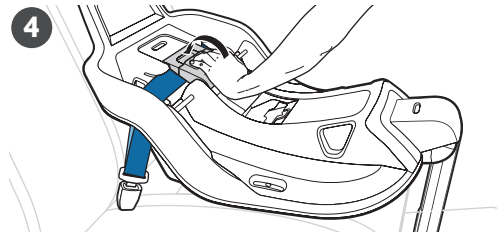
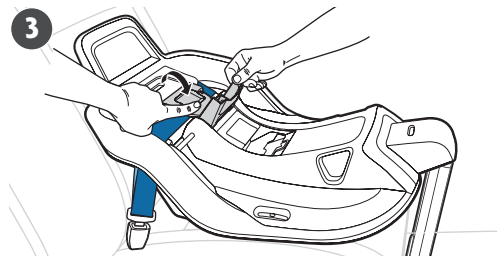
## Base Installation with Vehicle Seat Belt Lap Belt Only Routing Method

- 1 Route the vehicle belt through the belt path while guiding the lap portion of the belt as close as possible to the topside of the lock-off where the door hinges. Buckle the vehicle
- 2 With one hand push down base and hold firm as you pull lap belt to tighten and remove any slack.

**NOTE:** Tightness indicator should be **GREEN**.



## Base Installation with Vehicle Seat Belt Lap Belt Only Routing Method



- 3 While holding the excess lap belt webbing, firmly check the indicator. If **GREEN**, close the top of the lock-off over the vehicle belt.

**NOTE:** Tightness indicator should be **GREEN**.



- 4 Push the bottom of the lock-off all the way down until you hear an audible click.

**NOTE:** Anti-Rebound+ Panel must make full contact with the seat back. If it does not make full contact, please refer to the Waterfall note (page 43).

**LOAD LEG INSTALLATION CONTINUE TO PAGE 42.**

**REVIEW SAFETY CHECK ON PAGE 44.**

All steps must be achieved.



## Base Installation with Vehicle Seat Belt

CONTINUE IF USING PREFERRED LOAD LEG INSTALLATION



### INSTALLING LOAD LEG

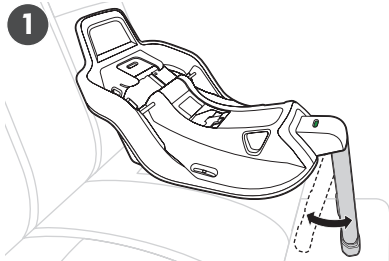
- 1 After the base is secured, rotate load leg extension until its showing fully **GREEN**.
- 2 Using two hands, separate the two ends ensuring the bottom of the load leg foot is making good contact with the vehicle floor.

**NOTE:** After installing the load leg, check the level angle indicator on base to ensure the bubble is still within the lines.

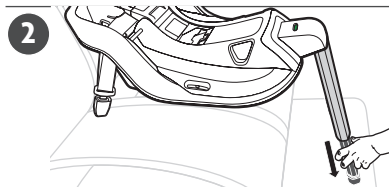
**REVIEW SAFETY CHECK ON PAGE 44.**

All steps must be achieved.

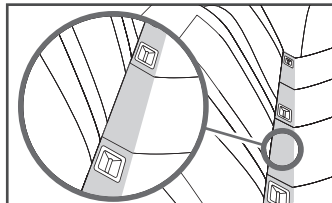
1



2



## Base Installation with Vehicle Seat Belt

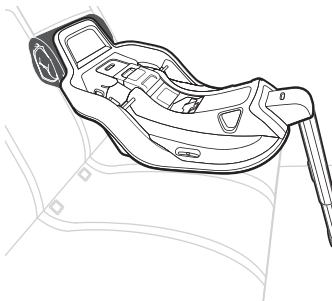


### WHAT IS A WATERFALL?

Many late model vehicles have what industry professionals call a waterfall. A waterfall is the wedge of material where your vehicle seat cushion and seat back meet. In some cases, this may prevent the Anti-Rebound+ Panel from making full contact with the vehicle seat back.

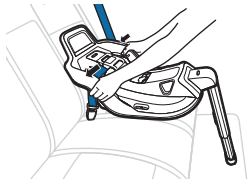
This is an easy issue to resolve by following the steps below:

- 1 Uninstall your Aria base.
- 2 Adjust the level adjustment foot to achieve proper recline level.
- 3 Push the base into the seat back. If there is a gap between the top of the Aria base and the back of the vehicle seat, place a rolled hand towel in the gap flush with the top of the base.
- 4 Proceed to **BASE INSTALLATION WITH VEHICLE SEAT BELT** (page 38 or 40) based on your method of installation). Follow Safety Check (page 44) to confirm proper installation.

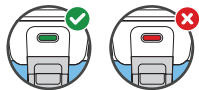




## Base Installation with Vehicle Seat Belt Safety Check



Lock-off must be used at all times when installing with a vehicle seat belt.  
Vehicle Belt is secure and untwisted.  
Base doesn't move more than 2.5 cm (1") side-to-side and front-to-back at the belt path.



Ensure tightness indicator is **GREEN** after each use. If it is not, reinstall base.



## Base Installation with Vehicle Seat Belt Safety Check



Recline angle is correct. Check the level angle indicator on base to ensure the bubble is still within the lines. **NO** partial bubble allowed.



**ALWAYS** check the Recline Position Indicator on the base and adjust the recline bubble to be between the designated range indicated for the infant insert use.



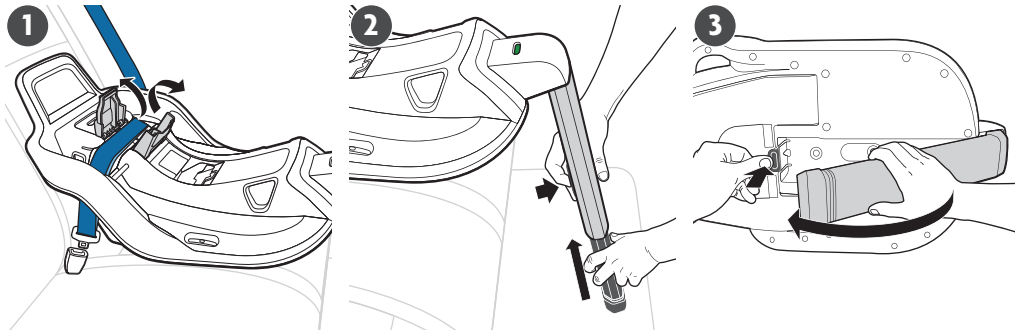
Make sure the load leg is secured and contacts the vehicle floor. Check that the load leg angle indicator is **GREEN**. Ensure good contact between load leg foot and floor. Always store the load leg under the base when not in use.

**ALL STEPS MUST BE COMPLETE.**

If not, return to page 36 and start over.



## Base Installation with Vehicle Seat Belt



### UNINSTALLING BASE AND STORING LOAD LEG

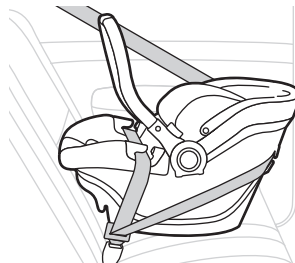
- 1 Unbuckle seat belt. Open lock-off and remove seat belt.
- 2 Push load leg extension release button on back of load leg and bring foot up until it locks into place.
- 3 Bring load leg back into base until it clicks into secure/stowed position.



## Carrier Installation with Vehicle Seat Belt

### DETERMINING BEST INSTALLATION METHOD

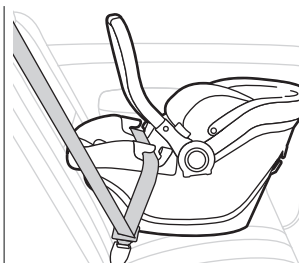
Carrier-only Installation can only be performed using the vehicle seat belt. There are (3) methods of carrier-only installation.



### LAP/SHOULDER PREFERRED ROUTING METHOD

Installation with both the lap and shoulder belt.

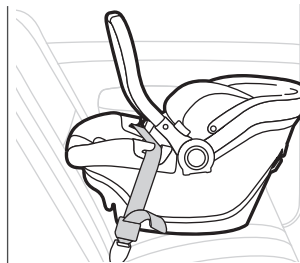
Page 47



### LAP/SHOULDER OPTIONAL ROUTING METHOD

Installation with both the lap and shoulder belt.

Page 52



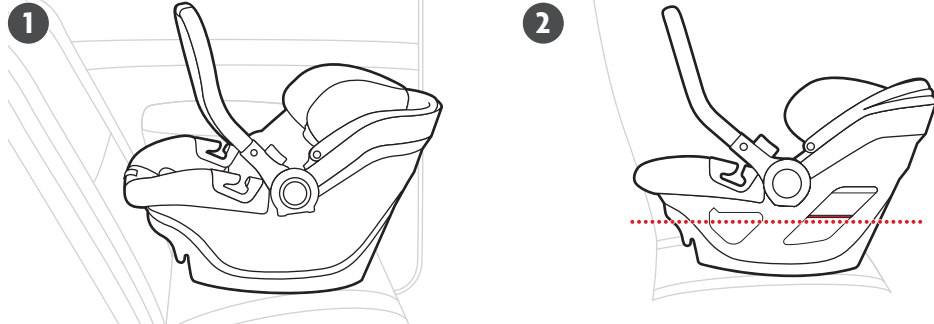
### LAP BELT ONLY METHOD

No shoulder belt is used. This method applies to vehicle with no shoulder belt and aircraft.

Page 54



## Carrier Installation with Vehicle Seat Belt



### LEVELING THE CARRIER

- 1 Place the carrier rear-facing on the vehicle seat.
- 2 The **RED** line on the carrier must be level to the vehicle floor.

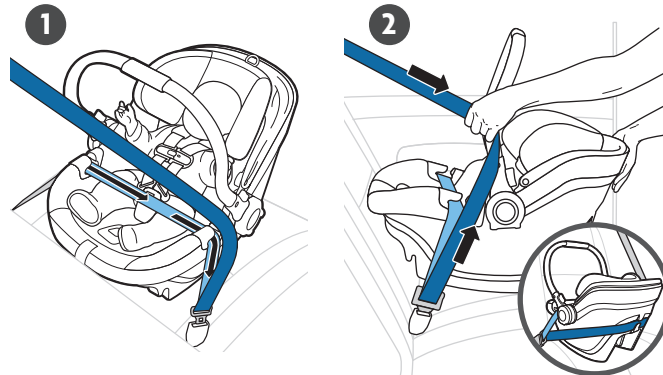


For a more stable installation, a rolled towel may be used.



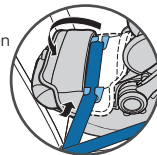
## Carrier Installation with Vehicle Seat Belt Lap/Shoulder Belt Preferred Routing Method

If shoulder belt does not route around the back of the Aria carrier, follow  
**LAP/SHOULDER BELT OPTIONAL ROUTING METHOD** page 50.



- 1 Route the lap portion of the seat belt through both lap belt guides on the carrier, and buckle the seat belt.
- 2 Route belt around the seat back through the rear belt guide.

**NOTE:** For installation with footcover and vehicle belt, fold back foot cover to access belt guide.

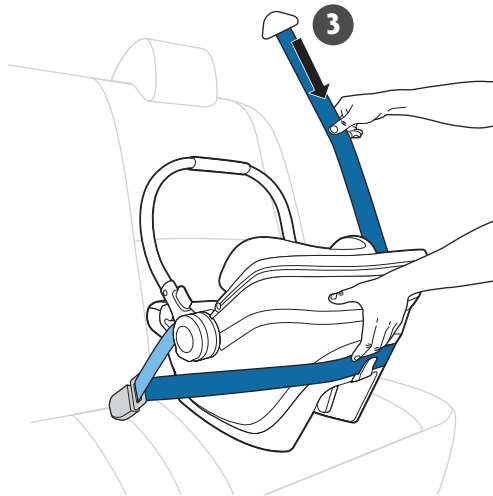




## Carrier Installation with Vehicle Seat Belt

### Lap/Shoulder Belt Preferred Routing Method

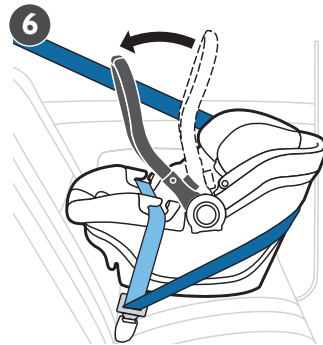
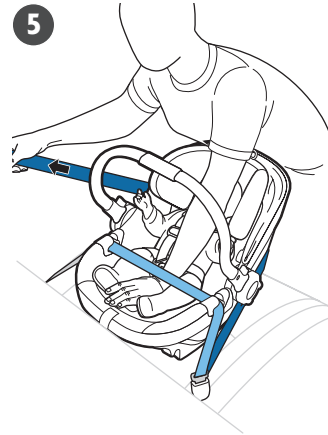
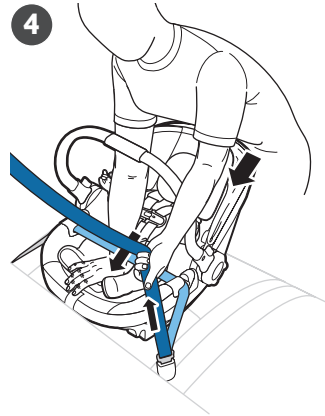
- 3 Lock vehicle seat belt.
- 4 Push the carrier into the vehicle seat bight (crease of the seat) and gently apply pressure from behind the carrier into the vehicle seat back. At the same time, pull on the shoulder portion of the vehicle belt closest to the buckle and hold tightly.  
**NOTE:** Be mindful of canopy.
- 5 Feed excess webbing into the vehicle retractor.
- 6 Rotate carry handle forward to the (5th) rebound position when in use.  
**NOTE:** Check that the carrier is still properly leveled.



## Carrier Installation with Vehicle Seat Belt

### Lap/Shoulder Belt Preferred Routing Method

- 4 Push the carrier into the vehicle seat bight (crease of the seat) and gently apply pressure from behind the carrier into the vehicle seat back. At the same time, pull on the shoulder portion of the vehicle belt closest to the buckle and hold tightly.
  - 5 Feed excess webbing into the vehicle retractor.
  - 6 Rotate carry handle forward to the (5th) rebound position when in use.  
**NOTE:** Check that the carrier is still properly leveled.
- REVIEW SAFETY CHECK  
ON PAGE 55.**  
All steps must be achieved.

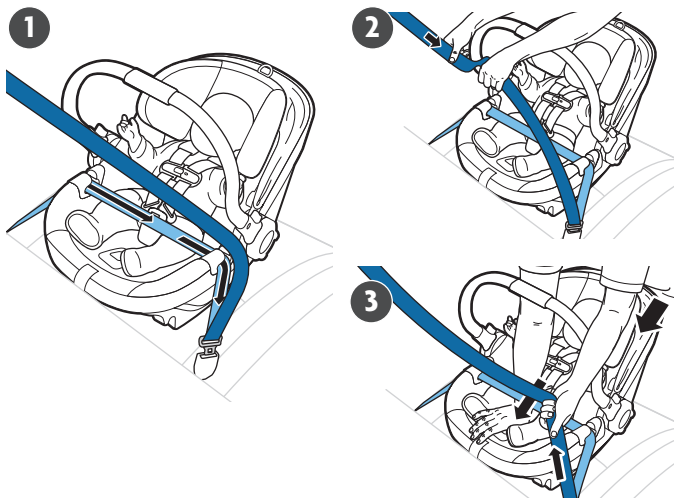




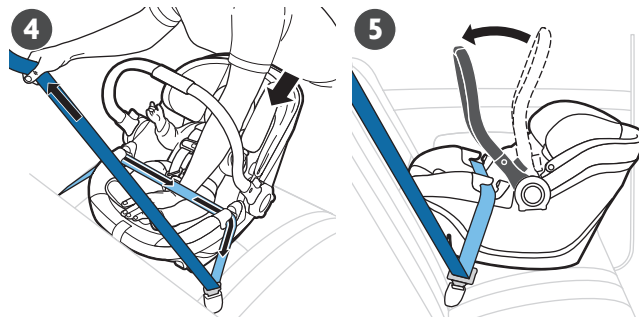
## Carrier Installation with Vehicle Seat Belt Lap/Shoulder Optional Routing Method

- 1 Route the lap portion of the seat belt through both lap belt guides on the carrier, and buckle the seat belt.
- 2 Lock vehicle seat belt.
- 3 Push the carrier into the vehicle seat bight (crease of the seat) and gently apply pressure from behind the carrier into the vehicle seat back. At the same time, pull on the shoulder portion of the vehicle belt closet to the buckle and hold tightly.

**NOTE:** Be mindful of canopy.



## Carrier Installation with Vehicle Seat Belt Lap/Shoulder Optional Routing Method



- 4 Feed excess webbing into the vehicle retractor.
- 5 Rotate carry handle forward to the (5th) rebound position when in use.

**NOTE:** Check that the carrier is still properly leveled.

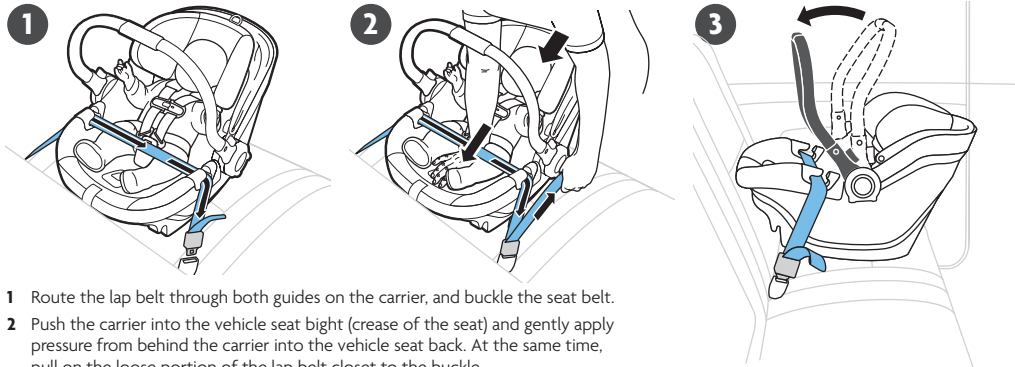
**REVIEW SAFETY CHECK  
ON PAGE 55.**

All steps must be achieved.





## Carrier Installation with Vehicle Seat Belt Lap Belt Only Routing Method



- 1 Route the lap belt through both guides on the carrier, and buckle the seat belt.
- 2 Push the carrier into the vehicle seat bight (crease of the seat) and gently apply pressure from behind the carrier into the vehicle seat back. At the same time, pull on the loose portion of the lap belt closest to the buckle.

**NOTE:** Be mindful of canopy.

- 3 Rotate carry handle forward to the (5th) rebound position when in use.

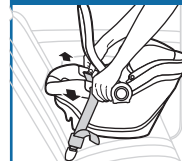
**NOTE:** Check that the carrier is still properly leveled.

### REVIEW SAFETY CHECK ON PAGE 55.

All steps must be achieved.

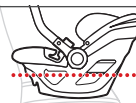


## Carrier Installation with Vehicle Seat Belt Safety Check



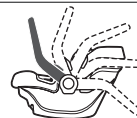
Carrier doesn't move more than 2.5 cm (1") side-to-side and more than 2.5 cm (1") front-to-back at the belt path.

Vehicle belt is secure and untwisted. Confirm vehicle belt is installed through belt guides and under the footcover.



Angle is correct when The **RED** line on the carrier is level with the vehicle floor.

Seating position is permitted by both UPPAbaby and your vehicle manufacturer for use with the type of Vehicle Seat Belt.



**NOTE:** Carry handle must be locked in the (5th) rebound position when in use in the vehicle.



## Carrier Installation with Vehicle Seat Belt

### Aircraft Installation



#### THIS CHILD SEAT IS CERTIFIED FOR AIRCRAFT USE WHEN USED WITHOUT A BASE.

UPPABABY AND TRANSPORT CANADA CIVIL AVIATION (TCCA) STRONGLY RECOMMEND THAT CHILDREN UP TO 18 KG (40 LBS) USE A CERTIFIED HARNESSSED CHILD RESTRAINT OR OTHER DEVICE APPROVED FOR AIRCRAFT TRAVEL. CONTACT THE AIRLINE ABOUT THEIR POLICY PRIOR TO TRAVELING.

#### AIRCRAFT INSTALLATION

When installing this child restraint on an airplane, install the same way as **SEAT INSTALLATION WITH VEHICLE SEAT BELT/LAP BELT ONLY ROUTING METHOD** (pg. 47)

**NOTE:** Make sure that the aircraft buckle does not interfere with the belt guides on the infant carrier.

**WARNING: DO NOT** use base with aircraft installation. Only the carrier is certified for aircraft use. Inflatable seat belts are NOT compatible with this child restraint.

#### SAFETY REMINDERS AND TIPS

- Notify the airline ahead of time that you'll be traveling with a child restraint and ask about their specific policies for using a child restraint system on board their aircraft.
- Install this carrier in a window seat to avoid blocking the aisle.
- Ask for a seat belt extender if the lap belt is too short.
- Use only on a forward-facing aircraft seat.
- DO NOT use this restraint if a secure installation cannot be achieved.
- Mandatory carry handle use position, must be in the (5th) rebound position for use in aircraft as long as it doesn't interfere with the back of the seat in front of the carrier.

## General Use – Infant Insert

The infant insert is designed to optimize fit and body positioning for smaller infants. We recommend you use the infant insert starting at 1.8 kg (4 lbs) and up to approximately 4 months.

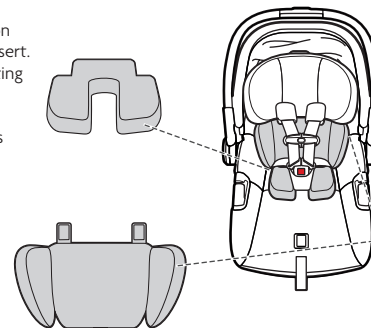
The infant insert is made up of two parts:

#### Preemie cushion **A**

Must be used in combination with the Back Positioning Insert. Recommended for use starting at 1.8 kg (4 lbs) and up to approximately 4.1 kg (9 lbs). Remove once infant reaches approximately 4.1 kg (9 lbs).

#### Back Positioning Insert **B**

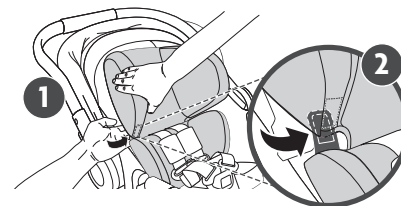
Can be used alone or in combination with Preemie Cushion. Recommended for use starting at 1.8 kg (4 lbs) and up to approximately 4 months.



**NOTE:** Prior to installation, locate the fastener tabs on both sides of the headrest.

#### Installing Infant Insert

- 1 Find the fastener tabs within the inside of the headrest located on the upper left and right portion of the headrest.
- 2 With your **Back Positioning Insert**, tuck the fastener tabs under the headrest fabric and press to secure.
- 3 With your **Preemie Cushion**, secure cushion around the buckle to ensure a proper fit.



## General Use – Infant Insert

### INFANT INSERT USAGE WITH PREMIE CUSHION **A** AND BACK POSITION INSERT **B**

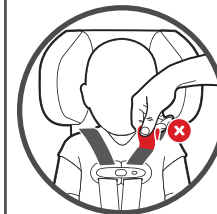
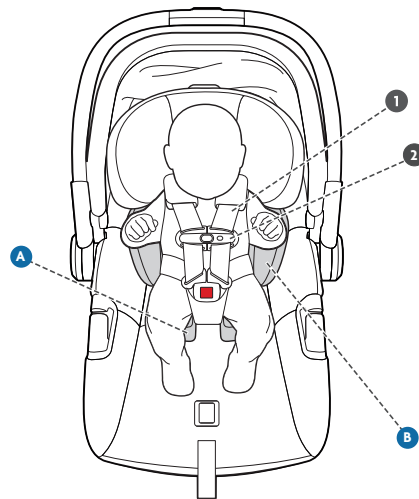
To ensure a better fit for smaller infants, use the 2-piece infant insert (included) for infants between 1.8 kg (4 lbs) and approximately 4.1 kg (9 lbs). This infant insert was designed to optimize fit and body positioning for your child.

**NOTE:** Continue to use the 2-piece infant insert until all criteria is met below:

- Harness straps are at or slightly below shoulders **1**.
- **NOTE:** Harness pads are optional. They must be removed when securing a preemie.
- Chest clip is at armpit level **2**.
- Child is not slouching and has good head and neck control.
- Crotch buckle rests securely against the child with no gaps and child is not sitting on top of the buckle.
- Harness can be properly tightened. Perform the pinch test to ensure proper fit.

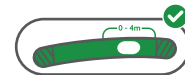
**NOTE:** Once the infant reaches approximately 4.1 kg (9 lbs), the lower Premie Cushion can be removed and the Back Positioning Insert can continue to be used alone until approximately 4 months.

## General Use – Infant Insert



### **HARNESS SHOULD BE SNUG.**

Pinch harness webbing at child's shoulders. If you can pinch webbing, the harness is too loose and should be tightened.

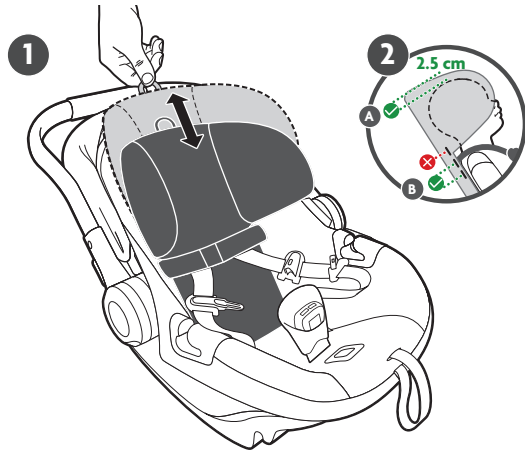


**ALWAYS** check the Recline Position Indicator on the base and adjust the recline bubble to be between the designated range indicated for the infant insert use.

When using with the Mesa Max base, align the bubble level toward the vehicle seat back within the approved range.

## General Use – SIP Carriage and Harness Positioning

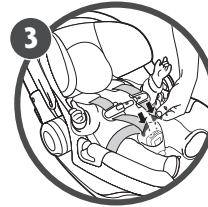
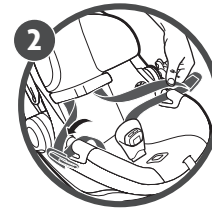
This child restraint has an adjustable head restraint and no-rethread harness system that is easy to adjust to properly secure the child.



- 1 Adjust the head restraint by pulling on the adjuster tab and sliding the head restraint up or down.
- 2 The Harness should be at the shoulders or slightly below.  
Minimum 2.5 cm (1") gap between the child's head and top of headrest **A**. Harness should be at the shoulders or 1-2 positions below **B**.

**WARNING: DO NOT** place rolled towels or small blankets around head or SIP carriage. **NEVER** use non-regulated products with this child restraint, unless approved by UPPAbaby.

## General Use – Securing Your Child

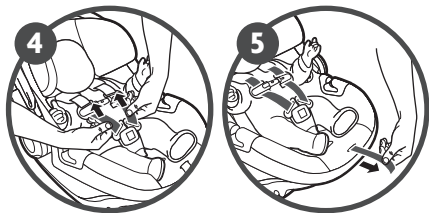


- 1 Loosen the harness by pressing on the harness adjuster release button and pulling out the shoulder straps toward the front of the carrier.
- 2 Open the retainer clip, unbuckle the harness, and tuck harness straps into belt guides to hold harness open.
- 3 Place infant in child restraint making sure their body is making full contact with the seating surface. Place harness over child and insert buckle tongues into the buckle until a "click" is heard. Pull up on the buckle tongues to make sure they are locked.

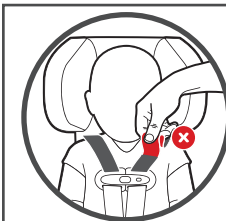
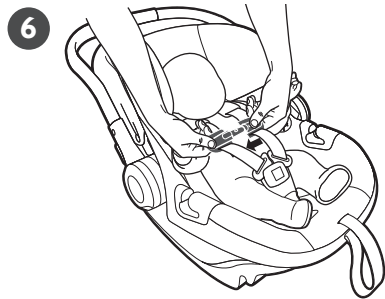
**NEVER** use non-regulated products with this child restraint, unless approved by UPPAbaby.

**STRANGULATION HAZARD:** Children have strangled in loose or partially buckled harness straps. Fully restrain the child even when carrier is used outside the vehicle.

## General Use – Securing Your Child



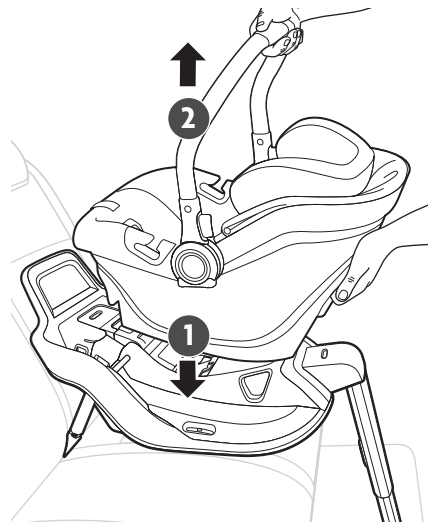
- 1 Pull up on the harness to remove excess slack around the child's legs.
- 2 Pull the harness adjuster strap to snugly adjust the harness straps around your child.
- 3 Close retainer clip and position at armpit level. Make sure the shoulder pads don't interfere with positioning the chest clip.



### **HARNESS SHOULD BE SNUG.**

Pinch harness webbing at child's shoulders. If you can pinch webbing, the harness is too loose and should be tightened.

## General Use – Attaching Carrier to Base



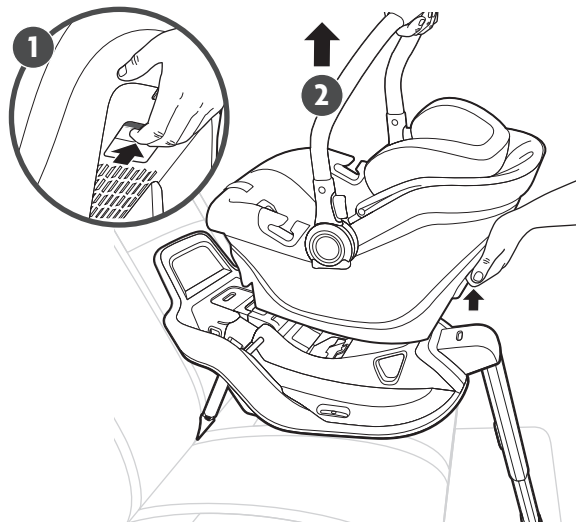
- 1 Place carrier on base until a click is heard.
- 2 Check for a secure connection by pulling up on carry handle.



**NOTE:** Carry handle must be locked in the (5th) rebound position when in use in the vehicle.

## General Use – Removing Carrier from Base

- 1 Pull and hold carrier release button on back of the carrier.
- 2 Lift carrier off base.



## General Use – Using Canopy

Hide-away canopy easily adjusts to one of two (2) positions.

### TO EXTEND CANOPY

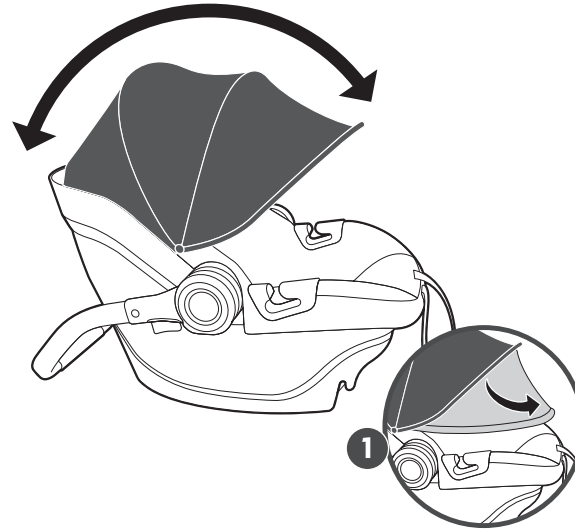
Slowly pull forward on main canopy frame until resting in desired position.

### TO STOW CANOPY

Gently push upward on main canopy frame allowing the center support and canopy fabric to guide into the storage compartment in carrier.

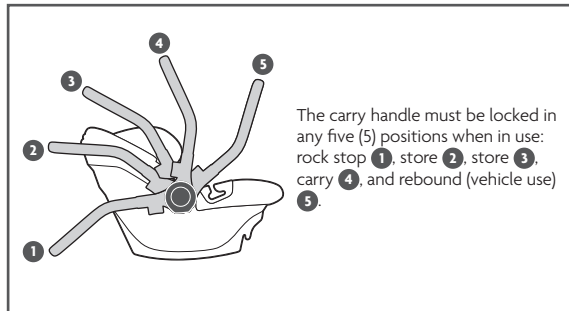
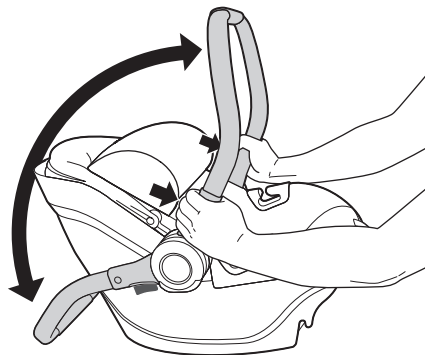
- 1 For additional coverage, the extended sunshade easily folds out and hides away for extra sun protection and privacy.

**NOTE:** Canopy can be in full extension or storage position while in vehicle. Never remove the canopy while in vehicle.



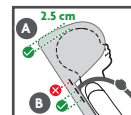
## General Use – Using Carry Handle

To adjust the carry handle position, squeeze both handle adjustment buttons and rotate forward or backward.



**WARNING: NEVER** hang toys and other objects from the carry handle when using in the vehicle. These products have not been tested by UPPAbaby and therefore are not approved for use with this child restraint.

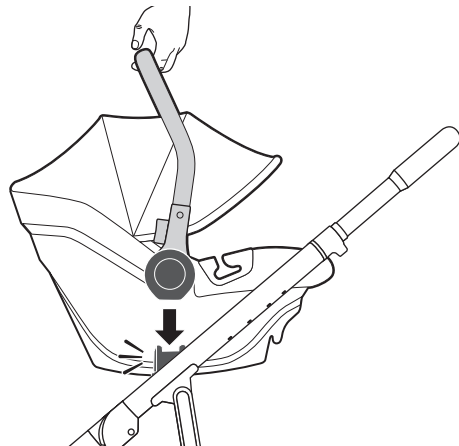
## General Use – Safety Check



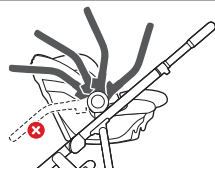
- This child restraint is for rear-facing use only.
- The seat must be tightly installed in a forward-facing vehicle seat.
- Minimum 2.5 cm (1") gap between the child's head and top of headrest **A**.
- Harness should be at the shoulders or 1-2 positions below **B**.
- Retainer clip must be at armpit level and harness straps should be snug **C**.
- The top of child's head should not be less than 2.5 cm (1") from the top of the headrest when in its highest position.
- The child must weigh between 1.8 and 10 kg (4-22 lbs) and be no taller than 81.3 cm (32").
- The back seat is the safest place for children aged 13 and under.
- **NEVER** use non-regulated products with this child restraint, unless approved by UPPAbaby.
- **NEVER** place in front of an active airbag.
- Install using lower anchor or the vehicle seat belt, NOT BOTH.
- **DO NOT** secure an infant in the carrier with extra material, bulky clothing, or extra padding. Instead place a blanket over the harness after properly securing the child **D**.
- Carry handle must be locked in the (5th) rebound position when in use in the vehicle.
- While in vehicle, the canopy can be fully extended or in storage compartment.
- Adjust base to the appropriate angle by using the angle indicator on the sides of the base or the level to ground line on the carrier.
- Always check the tightness indicator is **GREEN** after each use.
- Always secure an unoccupied child restraint; in a crash an unsecured infant car seat may injure occupants in your vehicle.

## Stroller Compatibility – Fitting Carrier to Stroller Frame

Prior to fitting Aria carrier to stroller frame, engage brake on stroller and remove toddler seat from frame.



- 1 With carrier facing stroller handle and carrier handle in carry position, align carrier handle hubs with attachment posts on stroller.
- 2 Let carrier slide onto attachment posts. An audible click indicates proper attachment.
- 3 Lift up on car seat handle to check attachment.

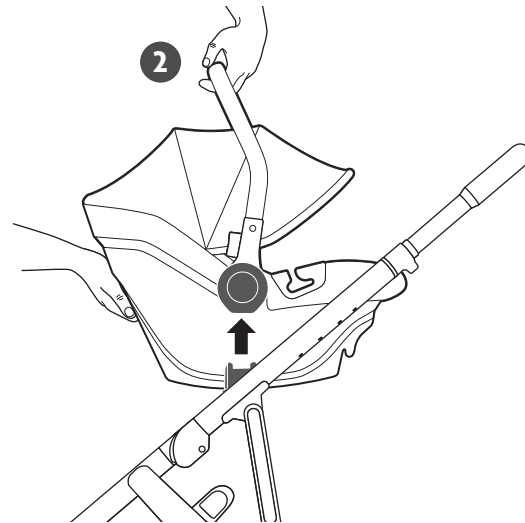
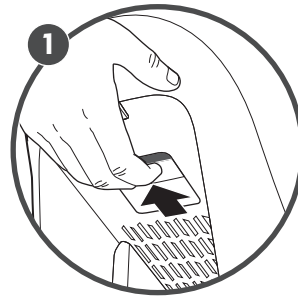


**NOTE:** Rock stop position is not permitted while using the stroller.

Compatible with Vista V3, Vista V2, Vista 2015+, Cruz V3, Cruz V2, Cruz. Compatible with Ridge, Minu and Minu Duo strollers with use of adapters specific to each model.

## Stroller Compatibility – Releasing Carrier from Stroller Frame

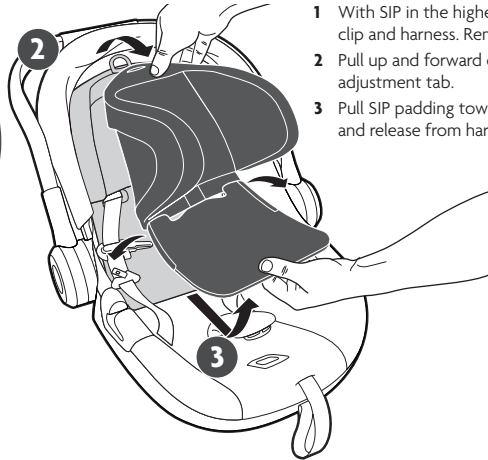
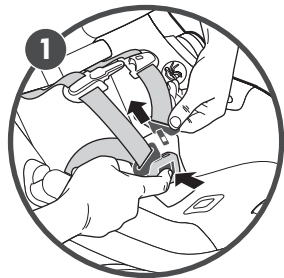
- 1 Engage and hold the stroller release button on the back of the carrier.
- 2 Lift the carrier off stroller frame.





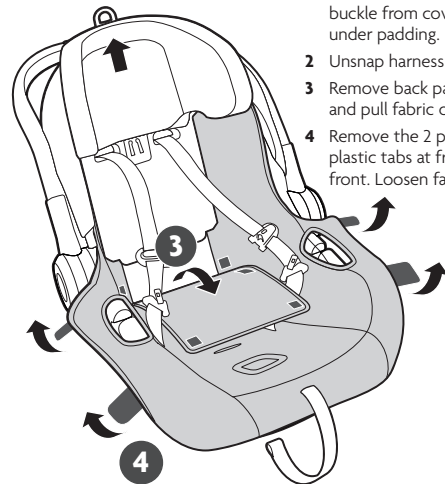
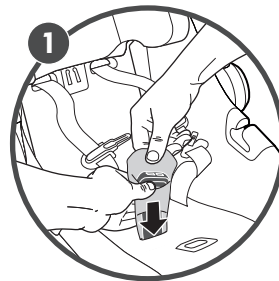
## Care and Maintenance – SIP Padding Removal

Following are fabric removal instructions for cleaning.



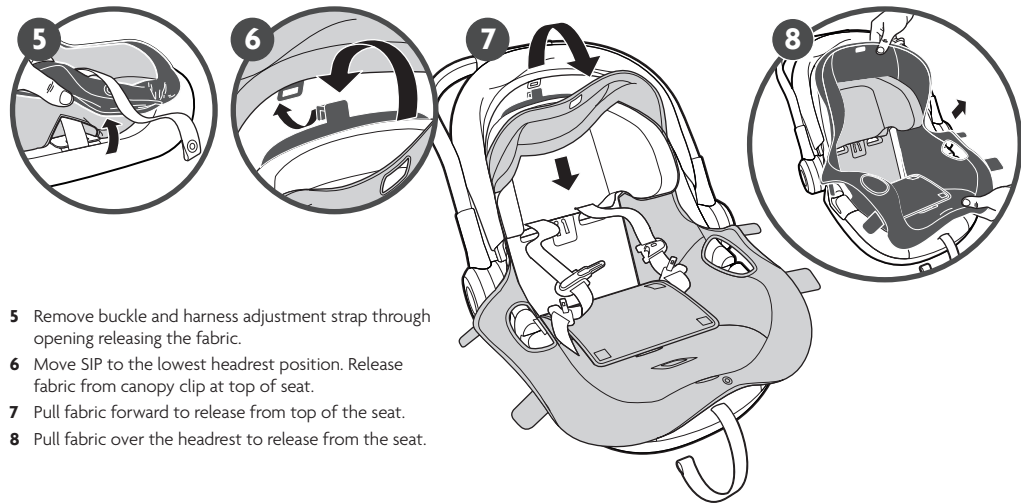
- 1 With SIP in the highest position, unbuckle retainer clip and harness. Remove harness pads.
- 2 Pull up and forward on SIP padding releasing SIP adjustment tab.
- 3 Pull SIP padding toward you and down from bottom and release from harness straps.

## Care and Maintenance – Seat Padding Removal



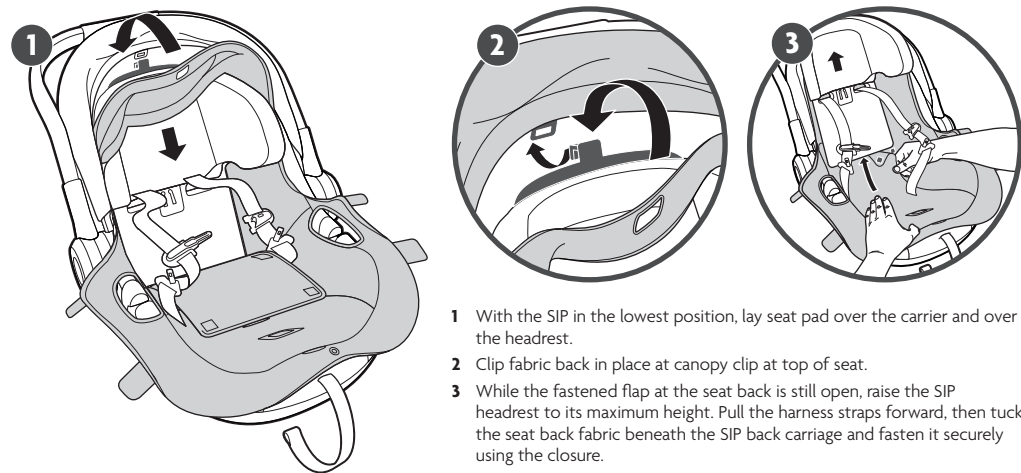
- 1 Start with headrest in the highest position. Release buckle from cover. Push buckle through opening under padding.
- 2 Unsnap harness adjustment strap.
- 3 Remove back panel of fabric by releasing closure and pull fabric out from under the SIP.
- 4 Remove the 2 plastic tabs at side of carrier and 2 plastic tabs at front of carrier to release fabric at front. Loosen fabric padding at the side buckle path.

## Care and Maintenance – Seat Padding Removal



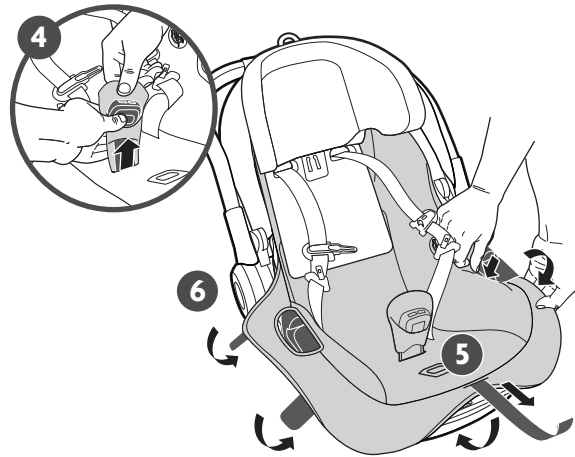
- 5 Remove buckle and harness adjustment strap through opening releasing the fabric.
- 6 Move SIP to the lowest headrest position. Release fabric from canopy clip at top of seat.
- 7 Pull fabric forward to release from top of the seat.
- 8 Pull fabric over the headrest to release from the seat.

## Care and Maintenance – Seat Padding Installation



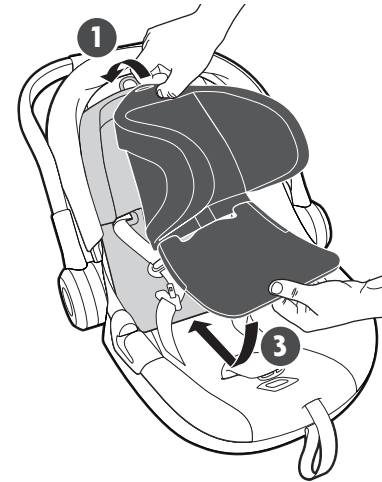
- 1 With the SIP in the lowest position, lay seat pad over the carrier and over the headrest.
- 2 Clip fabric back in place at canopy clip at top of seat.
- 3 While the fastened flap at the seat back is still open, raise the SIP headrest to its maximum height. Pull the harness straps forward, then tuck the seat back fabric beneath the SIP back carriage and fasten it securely using the closure.

## Care and Maintenance – Seat Padding Installation



- 4 Slip buckle up through opening in seat cover and buckle cover.
- 5 Thread the harness adjustment webbing through the fabric opening.
- 6 Finish by securing the fabric around the front edge of the seat. Continue to tuck fabric around the outside edges of the seat including around the vehicle belt guides and then tuck the 4 tabs under the seat padding to secure.
- 7 Snap harness adjustment.

## Care and Maintenance – SIP Padding Installation



- 1 Secure SIP cover tightly around SIP ears feeding SIP adjustment tab through opening in fabric.
- 2 Replace harness straps in front of SIP back padding.
- 3 Insert lower part of SIP carriage into pocket on the back of SIP padding.

## Care and Maintenance – Cleaning

### Cleaning Fabrics

Fabrics include: seat pad, infant inserts, buckle pads, shoulder pad, seat padding, SIP padding, harness pads, and buckle cover.



Machine wash in warm water on gentle cycle with mild detergent. DO NOT bleach.



Tumble dry low.



DO NOT iron or dry clean.

### Cleaning Harness Webbing and Canopy



Spot clean using warm water with mild detergent. DO NOT bleach.



Air dry completely before re-use or storage.

### Cleaning Plastic



Spot clean using warm water with mild detergent.



Towel dry completely before re-use or storage.

**Cleaning Buckle and Lower Anchor Connector Hardware** - Buckle should fasten with a “click” if not, rinse under warm running water. DO NOT use detergents or lubricants.

## Warranty

### PRODUCT LIFETIME WARRANTY

Lifetime warranty applies to UPPAbaby car seats and the original owner, within the lifetime of the product. To receive your Product Lifetime Warranty, you MUST provide a valid purchase receipt from an authorized UPPAbaby retailer. The lifetime of the product is up to 10 years from date of manufacture.

Your UPPAbaby product is warranted to be free from manufacturing defects for a period of 10 years from the date of manufacture under normal use and in compliance with the operating instructions.

This warranty is not transferable and extends only to the original retail purchaser and is only valid when supplied with proof of purchase from an authorized retailer. Proof of purchase must be retained for this warranty.

The warranty is valid only in the original country of purchase. This warranty is subject to the conditions set forth by country in which the items were purchased. Conditions may vary. UPPAbaby will not ship replacement or repair parts outside the country of purchase.

UPPAbaby will provide replacement parts or conduct repairs as determined fitting by the company. UPPAbaby reserves the right to exchange item with a replacement part. Some parts may be replaced with newer model parts as the item is improved over time.

## Warranty

This warranty does not cover:

- Defects caused by misuse or poor maintenance. (Please refer to the product instruction booklet for guidance on item use and maintenance).
- Damage caused by improper installation of UPPAbaby parts and/or accessories. (Please refer to product instruction booklet for guidance on item assembly and use).
- Damage caused by corrosion mold or rust due to poor maintenance, service or storage.
- Damage resulting from normal wear and tear.
- Damage or degradation caused by the sun, sweat, detergents, damp storage conditions or frequent washings.
- Repairs or modifications carried out by a third party.
- Product purchased from an unauthorized retailer. (Approved retailers are listed on our website [uppababy.com](http://uppababy.com)).
- Second owners and users other than the registrant.
- Damage resulting from airline shipping and handling.
- Products Involved in an accident.

UPPAbaby reserves the right to determine if warranty terms and conditions have been met.

For warranty service: In the US\* and CA please contact UPPAbaby customer experience (844) 823-3132 and visit [uppababy.com/support](http://uppababy.com/support) to send an email.

\*Within the US, warranty conditions may differ from state to state.

Outside of the US and CA please contact your local distributor. Distributor information can be found at [uppababy.com/global-distributors](http://uppababy.com/global-distributors).



USA | UPPAbaby, 276 Weymouth Street, Rockland, MA 02370

Canada | UPPAbaby Canada, 201 Wicksteed Avenue, Suite 2, Toronto, Ontario M4G 0B1

[uppababy.com](http://uppababy.com) | 1.844.823.3132

Model 1002-ARI-CA

All rights reserved. © 2025 UPPAbaby. UPPAbaby and all associated logos are trademarks. All product specifications are correct at time of print. UPPAbaby reserves the right to change anything at any time without prior notice. Color representation is as close as print processes allow. Not all colors available at all retailers. UbMAN228-V12